

Customer :

customer

Customer part :

customer part

Comment :

Comment

S1=1.52

S2=2.25

Tmax=459

Tp S2=498.0

PI=0.4

HI=109

Sample =1657.60

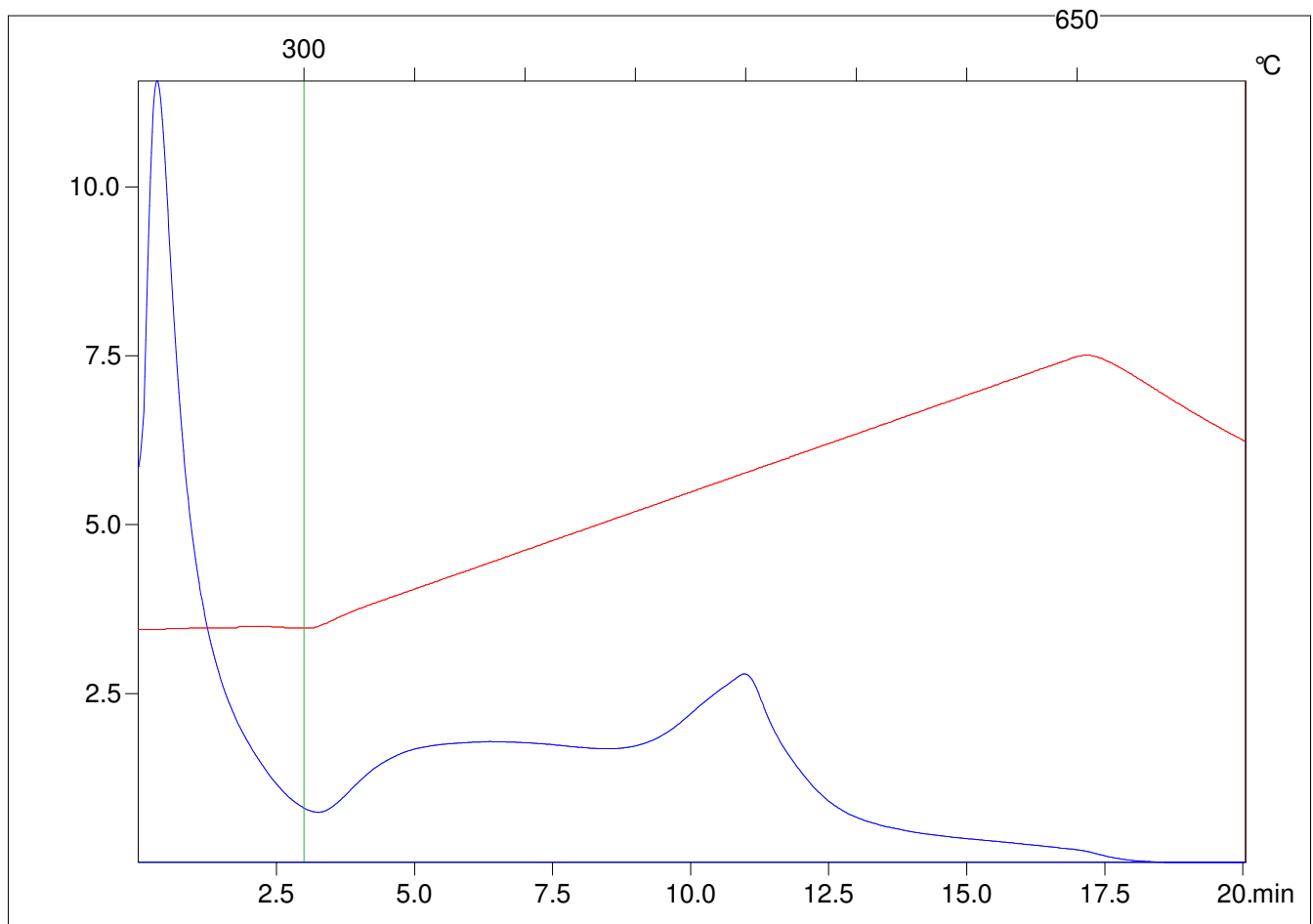
Method =Bulk Rock

Cycle=Basic

KFID(10*9)=1444

Qty =70.3

TOC=2.07



C:\VINC\PK1792\PK083.R00 : FID pyrolysis graphic

State

Pyro Status

Oxi Status